

# CRESCENT ELEMENTARY DEN DISPATCH

Follow us



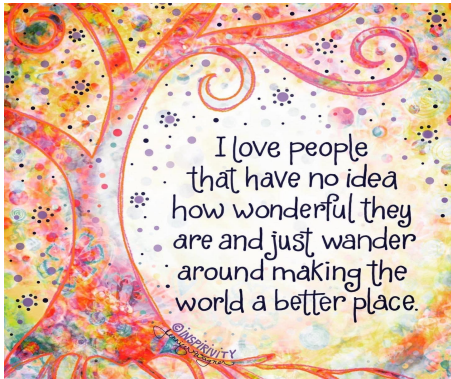
CRESCENT ELEMENTARY

Principal Camie Montague

Phone: 801.826.8200

<http://crescent.canyons.org>

September 2022



## Principal's Message

I would personally like to thank our Crescent Families we are off to a GREAT start. Our Crescent Cubs are working so hard to show what they know, staying safe and learning. We need many more PTA memberships. Your membership allows us to keep our charter which allows us to raise money, support the teachers, students, and the school. There is still room for you! PTA is a great way to get involved at any level. Volunteer and commit to what you can do. Many hands make light work. There are some PTA sponsored events and ways to help attached in the dispatch. Thank you for all you do Crescent is a great place to learn and grow due to our amazing families!

Principal Camie Montague

## Parent Teachers Conferences 9/22 - 9/29

Parent teachers conferences will be in person this year. This is a great way to find out how your Children are doing. Remember this is a great time to start filling out the information for Conquering Cub awards, the first one will be held in March. Please be on time so that you are able to visit with the teacher and get all of your questions addressed.

**Sign-ups for PTC will open Monday, September 12<sup>th</sup> to Tuesday the 20<sup>th</sup>.**

## PTA No Fuss Fundraiser 10/3 to 10/10

Start saving up your loose change for the penny wars. Students can bring loose change to put in a jar, the team with the largest amount wins!

It costs the PTA **\$30 per student** to fund programs at Crescent. We are asking families to donate money to our no-fuss fundraiser and in turn, we do not have to sell anything!

PTA keeps 100% of your donation and all of the money goes to crescent Elementary and students. PTA supports activities, technology, student rewards, incentives, assemblies, busses for field trips, watch DOGS, and so much more! Please know that we will gratefully accept any amount you can donate. (Watch for flyer's on Friday 9/30)

## Core 5

Lexia® Core5® provides differentiated literacy instruction for students of all abilities in grades pre-K–5. This research-proven program provides explicit, systematic, and personalized learning in the six areas of reading instruction. Core5 targets skill gaps as they emerge, and provides extension learning for advanced readers. Teachers have access to data and student-specific resources they can use for individual or small group instruction.

Students know how to access all learning programs through Clever. Parents please help them access Core5 through the Crescent website.

At parent teacher conferences you will be receiving your child's password into Clever. For the younger grades, students are using a QR code that will allow them to login. This program is very helpful in filling in academic gaps and challenging children on an individual level. The expectation for this program is 12 units a week, to gain a years worth of growth. If your student is behind in reading the recommended amount of time is 16 + units to grow more than a typical year. Every child's teacher has access to how long each child has been on the computer, how many units they have passed. Our goal is to have every student pass off their grade level by the end of the year.

## Pick up and Drop off

Parent drop off and pick up are in the North parking lot. If you need to help unbuckle your student, go into the building etc... please pull into the parking lot and park.

When in the drop off/pick up zone:

Driver please do not get out of your car

Pull as far forward as you can

Have students quickly exit the car

Do not pull forward until your student is safely on the curb

Please remember that the South parking lot is for buses only. Parents are not allowed in the South parking lot until the buses have left. Students can also be dropped off on the south side of the property along the west field.

Curbside in the north parking lot.

## Parent Square

Parent square will eventually be the only way for the school to communicate information to parents. If you have not signed up please do so. Teachers are able to communicate in multiple languages, get information out quickly and easily. Parents are able to communicate in the native language, ask and answer questions, and get a timely response on one format.

Here is a link:

<https://www.canyonsdistrict.org/parentsquare/>

### Illness

Please make it a priority to have your **healthy** children at school and on time everyday.

If anyone in your child is experiencing any of these symptoms please do not bring them to school.

Fever, Vomitting, Diarrhea or contagious

We are really Pushing for above 86% daily attendance this includes checking children in and out of school.

Please help keep all student in school healthy and safe.

### Resilient Kids

We are working on a school-wide process for student to be more resilient. The steps for students are:

- 🐾 Change tone of their voice
- 🐾 Look the other student in the eye
- 🐾 Say "STOP [touching, name calling, poking me] or I'll report it!"
- 🐾 If it happens again, report what is happening to an adult.

This procedure helps all children establish their own personal space and how to advocate for themselves.

### BELL SCHEDULE (Mon-Thurs)

Regular Schedule—9:00 am- 3:35 pm

AM Kindergarten—9:00am-11:40 am

PM Kindergarten—12:55 pm-3:35 pm

### FRIDAY SCHEDULE

Friday Schedule—9:00 am- 1:55 pm

AM Kindergarten—9:00am-11:00 am

PM Kindergarten—11:55 pm-1:55 pm

# Crescent Elementary




# FREE

# FAMILY SKATE NIGHT!



**Thur. Sept. 22nd**  
**5-8:30p.m.**

**SKATING ADMISSION INCLUDED FREE!**

 (Rollerskate, Rollerblade and Scooter Rentals Only...\$3.00)  
  **OR just bring your own from home!**



**Bring The Whole Family  
For A Rollin' Good Time!!**

**Supported by the PTA**

**9151 S. 255 W. SANDY, UTAH • WWW.CLASSICFUNCENTER.COM • 801-561-1791**

**UPGRADE TO UNLIMITED ACTIVITIES FOR \$10**

\*BONUS\* 15 GAME CREDITS + 30 REDEMPTION TICKETS



**BOUNCE WORLD**  
UTAH'S LARGEST INFLATAPARK!



**THE JUNGLE**  
ZIP LINES, SLIDES, ROPE SWINGS



**BLAST ZONE**  
5000 FOAM BALLS & AIR CANNONS



**ZOMBIE SURVIVAL**  
LASER TAG + SHOOTING GALLERY



The Kroger Family of Companies is committed to helping communities through Smith's Inspiring Donations. This program donates to local organizations based on the shopping you do every day.

Once you link your Card to an organization, all you have to do is shop at Smith's and swipe your Shopper's Card. Here's how it works:

### **1. Create a digital account at: *smithsfoodanddrug.com*.**

A digital account is needed to participate in Smith's Inspiring Donations. If you already have a digital account, simply link your Shopper's Card to your account so that all transactions apply toward the organization you choose.

### **2. Link your Card to an organization.**

Selecting the organization that you wish to support is as simple as updating the Smith's Inspiring Donations selection on your digital account.

1. Sign in to your digital account.
2. Enter the name or NPO number of the organization you wish to support. choose: **Crescent Elementary School**
3. Select the appropriate organization from the list and click "Save".

### **3. Crescent Elementary School Earns**

Any transactions moving forward using the Shopper's Card number associated with your digital account will be applied to the program, at no added cost to you. Smith's Inspiring Donations will donate 0.5% of all eligible spending to organizations that customers have linked to their Rewards Card.

Let's get started today!





## Support Crescent Elementary PTA every time you shop online at Amazon!

### What is AmazonSmile?

AmazonSmile is a simple way for you to support Crescent Elementary PTA every time you shop, at no cost to you. AmazonSmile is available at smile.amazon.com on your web browser and can be activated in the Amazon Shopping app for iOS and Android phones. When you shop with AmazonSmile, you'll find the exact same low prices, vast selection and convenient shopping experience as Amazon.com, with the added benefit that AmazonSmile will donate 0.5% of your eligible purchases to Crescent Elementary PTA.

### How do I shop with AmazonSmile?

To use AmazonSmile, simply go to smile.amazon.com on your web browser or activate AmazonSmile in the Amazon Shopping app on your iOS or Android phone within the Settings or Programs & Features menu. On your web browser, you can add a bookmark to smile.amazon.com to make it even easier to return and start your shopping with AmazonSmile.

### Which products on AmazonSmile are eligible for charitable donations?

Tens of millions of products on AmazonSmile are eligible for donations. You will see eligible products marked "Eligible for AmazonSmile donation" on their product detail pages. Recurring Subscribe-and-Save purchases and subscription renewals are not currently eligible.

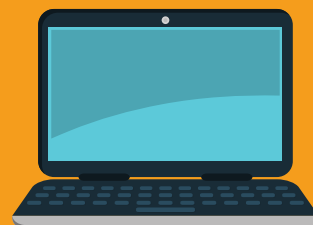
### Can I use my existing Amazon.com account on AmazonSmile?

Yes, you use the same account on Amazon.com and AmazonSmile. Your shopping cart, Wish List, wedding or baby registry, and other account settings are also the same.

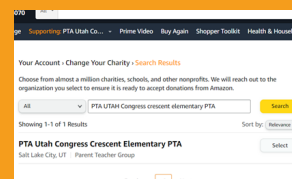
### How do I select a charitable organization to support with AmazonSmile?

On your first visit to AmazonSmile, you will be prompted to select a charitable organization to receive donations from your future eligible AmazonSmile purchases. **Choose- PTA Utah Congress Crescent Elementary PTA.** Amazon will remember your selected charity whenever you shop at smile.amazon.com or with AmazonSmile activated in the Amazon Shopping app, and then every eligible purchase you make through AmazonSmile will result in a donation for your selected charity.

Go to Smile.Amazon.Com



Select **PTA Utah Congress Crescent Elementary PTA**



Shop and select products eligible for AmazonSmile



Pay using information from your Amazon.com account



When you shop at Smile.Amazon.com, Amazon will donate directly to Crescent Elementary PTA!